



# Imajin Manufacture

*Solution For Your Business in Manufacture Industry*

# Imajin Manufacture

*Solution for your business in manufacture industry*

Imajin is a Manufacturing HUB where everyone can easily choose a local manufacturer to create its product. We build a creative manufacturing ecosystem in Indonesia. And now, almost 100 SMEs are joining us as our manufacturing partner. Our platform is making it easier for SMEs in the manufacturing industry to get a project base online. Following the idea of Industry 4.0, Imajin is the solution for every layer of manufacturing. We are connecting manufacturer from tier one to another tier. Every SMEs can communicate with all the partner sources and get notif for all new project.

Besides the platform, Imajin also gives mould and dies making services, even custom parts, in the manufacturing industry. We are using global standard quality, base on our experience with international manufacturers. We ensure all the projects using our platform could be monitored transparently to achieve the required quality standard.

# Why in Imajin Manufacture

*Reasons Why You Need To Join Us*

---



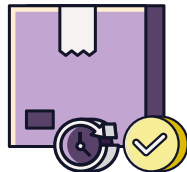
## **System Online**

Imajin Manufacturing is a platform base online, make it easier to access



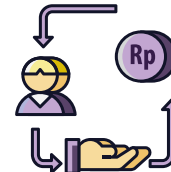
## **Trusted Partner**

Partners that already join Imajin is the partners who have been verified



## **Fast, Credible and Safe**

The process is fast, precise and safe, with quality guaranteed

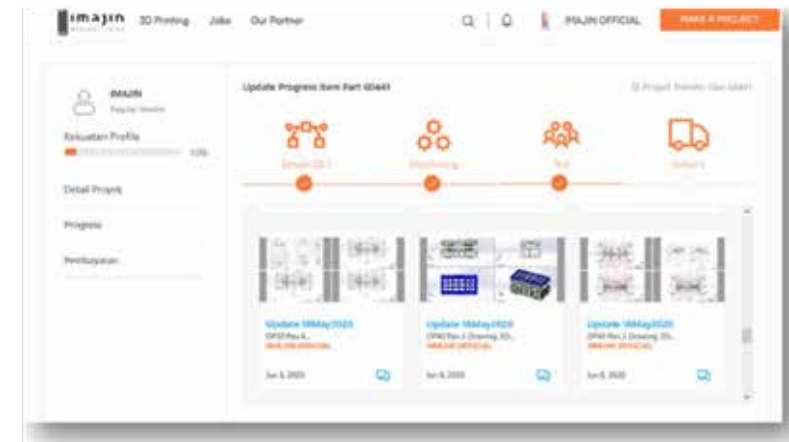
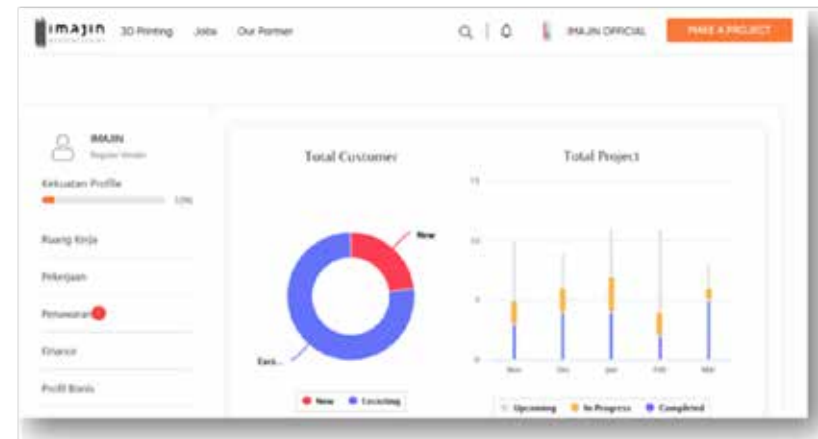
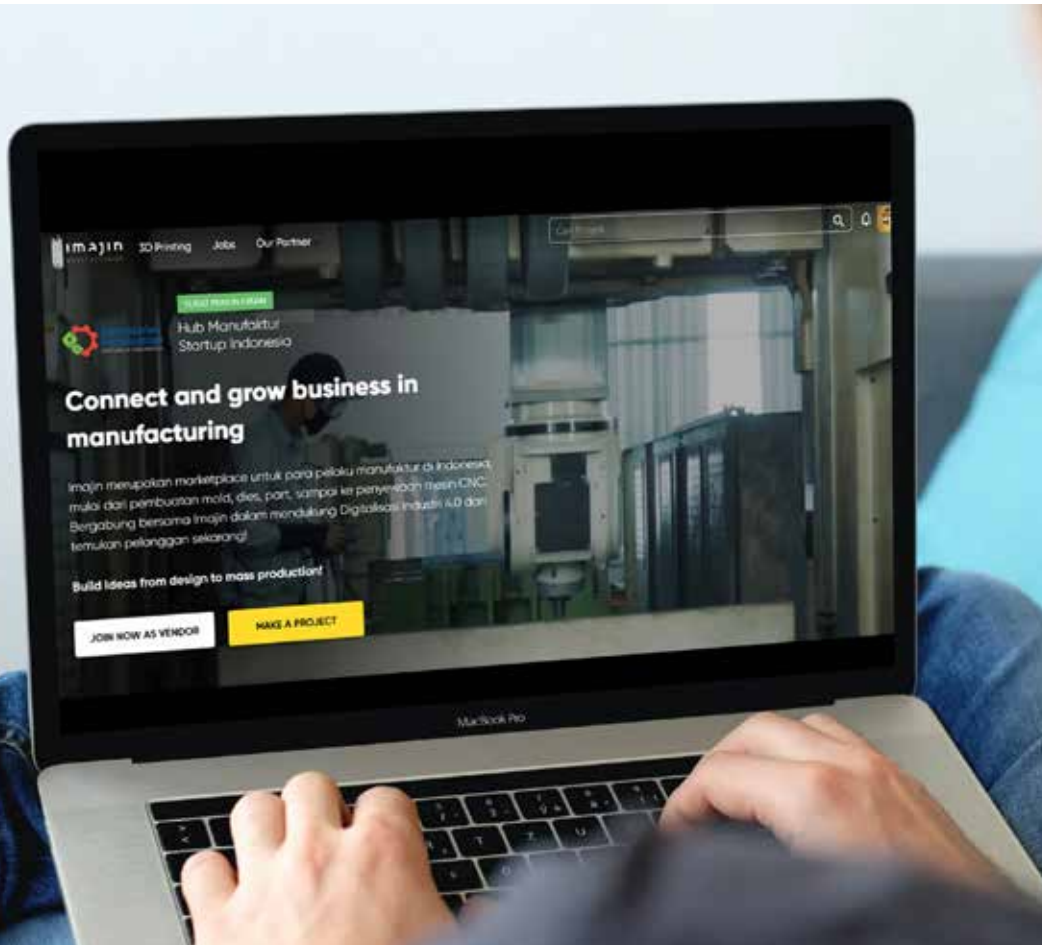


## **Impact on Society**

We are connecting all the partners and clients, so it'll be easier to finish the project

# Our Platform

Reasons Why You Need To Join Us



# Our Services Specialist

*Reasons Why You Need To Join Us*

## Mold and Dies Maker



- *Design Parts,*
- *Design Mold & Dies,*
- *3D Analysis,*
- *Conformal Cooling,*
- *Hard Chrome,*
- *Mirror Finish*
- *Progressive, Transfer,*  
*Tandem Dies*



# Our Machines

*Beberapa jenis mesin CNC untuk membuat dies, mold, part, dll*



# Our Injection Molding Service



Name	Description
<b>Minimum order quantity</b>	500 pcs
<b>Mold Material</b>	Tool Steel P20, Carbon Steel S50C, Aluminum, Hard Chrome

Name	Description
<b>Mold Types</b>	Rapid tooling, production tooling
<b>Mold Storage</b>	Minimum 2 years
<b>Mold Lead Time</b>	3-4 weeks (Rapid tool), 4-6 weeks (Production tool)
<b>Quality Assurance</b>	Inspection reports included, full dimensional report and material certifications available upon request.
<b>Sample Verification Program</b>	Client will receive 2 sets of parts upon the machining of the mold to test fit before continuing with full production.
<b>Mold Remachining</b>	We can remachine the molds should any changes be required, changes to be reviewed on a case by case basis.
<b>Additional Technical Support</b>	Dedicated Imajin team Mechanical Engineer for technical support.
<b>Reorders</b>	Unit price is based on the quantity required for the reorders.

# Our Injection Molding Capabilities

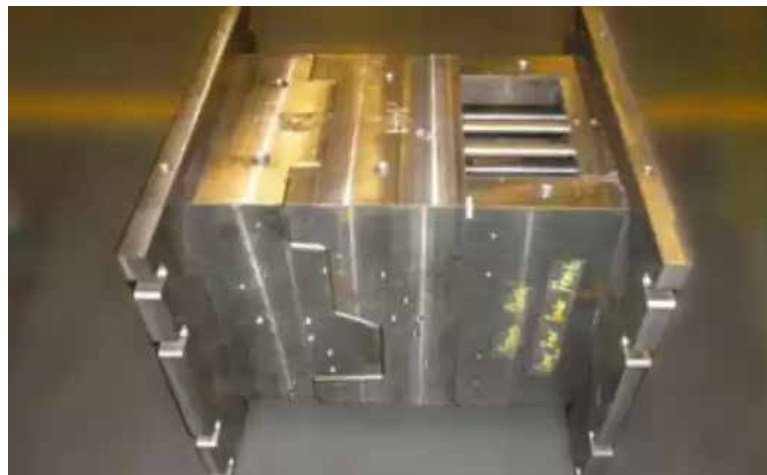
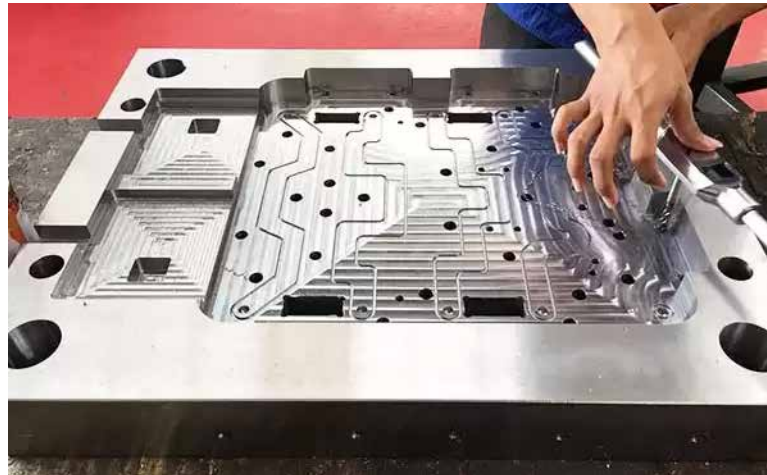
Name	Description
<b>Rapid Tooling</b>	Molds with aluminum inserts with a life time of up to 20,000 runs. Machined in typically 3-4 weeks.
<b>Production Tooling</b>	Traditional hard molds, machined in typically 4-6 weeks.
<b>Single Cavity Molds</b>	Molds containing only one cavity, producing one unit per run.
<b>Molds With Slider</b>	Molds with Slider out of the part from the side before it is ejected from the mold. This allows for undercuts to be molded.
<b>Multi-Cavity Molds</b>	Multiple identical cavities are machined into the mold tool. This allows for more parts to be produced per shot, minimizing the unit costs.
<b>Family Molds</b>	Several parts are designed into the same mold tool. This allows for the minimization of tooling costs.

Name	Description
<b>Insert Molding</b>	Inserts are placed into the mold and molding occurs around them. This allows for inserts such as heli-coils to be molded in your design.





# Our Mold Portfolio

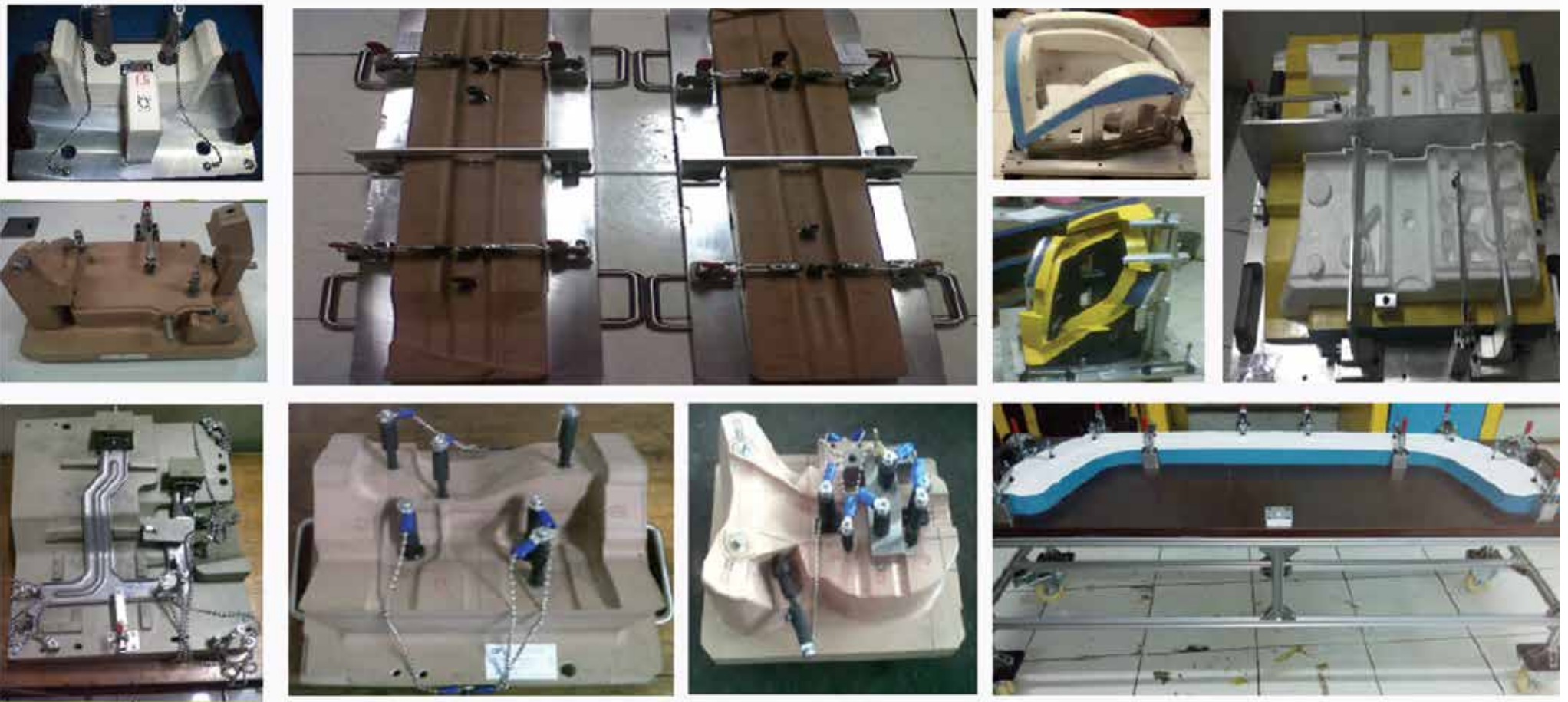


# Our Dies Portfolio





## Our CF Portfolio



*Sample Checking Fixture for metal stamping, plastic injection, etc*